

Product Datasheet

Alumasc Extruded Polystyrene Uprand Board

Sheet No: PD101aFR

Issued: June 2016

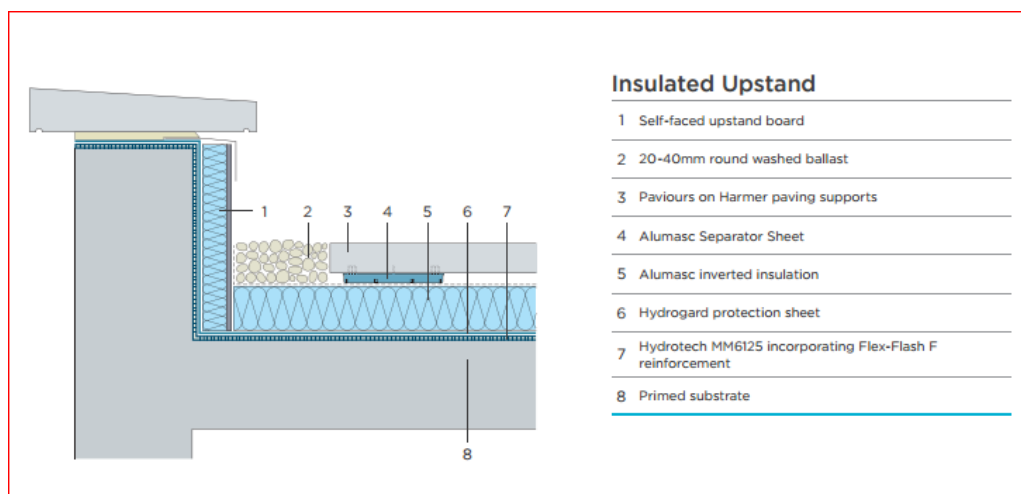
Pages: 1 of 2

Description

Alumasc Extruded Polystyrene Uprand Board is a CFC and HCFC free, square edged, extruded polystyrene insulation board, grey in colour, with a 10mm weather resistant mortar facing. The long side is tongue and grooved, whilst the short side is square edged.

Use

For use as a vertical upstand insulation board on inverted roof build ups.

**Approvals**

Manufactured in accordance with ISO 14001:2004 and ISO 9001:2008.

Application

Install against the waterproofed upstand, held in place at the base by the adjacent horizontal insulation and at the head by a metal flashing, coping or cladding system, or similar. Adhere board with spots of low solvent content bituminous mastic, such as Derbitech Sealstick HD, for extra stability and alignment. The boards can be cut with a masonry saw.

Storage

Store in a clean, dry location, away from heat sources. Do not leave exposed to direct sunlight.

Product Datasheet

Alumasc Extruded Polystyrene Upstand Board

Sheet No: PD101aFR

Issued: June 2016

Pages: 2 of 2

Product Data

Standard Thickness (including 10mm facing)	60mm
Width	1200mm
Length	600mm
Weight	33 kg/m ³

Performance Data

Thermal Conductivity ('k' value) * Declared thermal conductivity λ_D according to EN 13164 (§ 4.2.1; Annex A; Annex C.2 and C.4.1)	0.030 W/m ^{°C}
Compressive Strength @ 10%	300 kN/m ²
Ozone Depletion Potential (ODP)	Zero
Global Warming Potential (GWP)*	< 5
Reaction to Fire (Euroclass)	E

Health & Safety

Safety Data Sheets are available upon request, and can also be downloaded directly from www.alumascroofing.co.uk

Technical Support

Technical advice is available from Alumasc Technical Services at:

Telephone: +44 (0)1744 648400

Email: roofing@alumasc-exteriors.co.uk

The company pursues a policy of constant product development and information contained in this publication is therefore subject to change without notice. The customer is responsible for ensuring that each product is fit for its intended purpose and that the conditions for use are suitable. All quoted data is nominal and subject to production tolerances.