



Accessories

A wide range of accessories completes the Alumasc Roofing systems offer, making it the UK's most comprehensive roofing package available from a single source.

Contents

▪ Skyline Copings	107
▪ Skyline Fascia and Soffit Systems	107
▪ ProLINER Refurbishment Roof Outlet	108
▪ Harmer Roof Outlets	108
▪ Harmer Modulock and Uni-Ring Paving Supports	108
▪ PP-3 and Roof-Nek Access Risers and Upstands	109
▪ RedLINE and FlamLINE Integrated Expansion Joints	109
▪ Lite-Anchor Lightning Conductor Fixing	109

Skyline Copings, Fascia and Soffits

The Skyline range of aluminium coping, fascia and soffit systems is ideal for use at roofing and gutter interfaces. Skyline is manufactured in-house from high quality polyester powder coated aluminium with standard and bespoke designs available.

Skyline Copings

An economical and easily installed capping for upstand parapets, in conjunction with flat or pitched roofs. Skyline copings are maintenance free, available in a wide range of colours and equally suited to retrofit and new build.

The strap fixing method avoids penetration of the capping, whilst allowing ventilation over the top of the wall. Attractive, clean lines are maintained as fixings are not visible on the surface of the coping. The thickness of the aluminium and fixing mechanism gives excellent rigidity.

Skyline Fascia and Soffit Systems

Skyline's range of fascia profiles in aluminium, complemented by interlocking soffit planks, provides a wide choice of building eaves solutions.

Fascia profiles combine with soffit panels to create a range of fascia configurations which may be projected direct from the elevation, or they may be combined with Alumasc soffit planks to produce varying eaves overhangs.

There are four generic fascia profiles – bullnose, parapet, aerofoil and chisel. These are complemented by interlocking soffit planks, providing a choice of building eaves solutions.



ProLINER Refurbishment Roof Outlet

ProLINER is a rainwater refurbishment outlet made from durable materials (malleable copper and lead) for flexibility. It is designed for situations where the existing outlet is damaged or has vulnerable lead sleeve sections in place.

Where it is desirable to keep the existing outlet in place ProLINER is sealed to the existing downpipe as a direct replacement. The refurbishment outlet provides a new outlet, without causing any disruption and risk to the interior of the building.



Harmer Roof Outlets

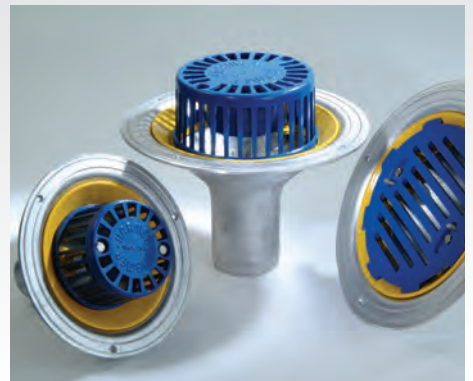
High performance roof outlets used for warm and inverted roofs.

Harmer AV® - high capacity aluminium outlets for regular flat roofing applications with continuous membranes.

Harmer Detail - aluminium outlets for balconies, gullies and car parks etc.

Harmer Cast Iron - outlets for load bearing applications.

Harmer Insulated - outlets with polyurethane foam bodies that prevent condensation forming on the underside. Heated versions are available.



Harmer Modulock and Uni-Ring Paving Supports

Harmer Modulock - a fully engineered raised pedestal system for supporting paving slabs or timber decking at varying heights from the sub-structure. Modulock is available with a self-levelling head which compensates for gradients up to 5°, a fixed head, or a timber decking head.

Harmer Uni-Ring - a versatile, economical fixed height system for concealed drainage beneath paving slabs, based on shallow (16mm) injection moulded polyethylene rings.



PP-3 and Roof-Nek Access Risers and Upstands

Used to weatherproof unavoidable penetrative details for pipe and cable entry in flat roof plant areas, ensuring cable and pipe access points are watertight and insulated.

PP-3 Access Riser - provides a watertight entry point to run larger cables and pipes into the building (choice of standard sizes; bespoke designs also possible).

Roof-Nek Access Riser - upstand facilitates watertight entry points for small service pipes and cables (one standard size).



RedLINE and FlamLINE Integrated Expansion Joints

Fully integrated flat expansion joints sealed into the waterproofing - compatible with hot-melt, asphalt and bituminous membranes.

RedLINE - compatible with hot bituminous membranes.

FlamLINE - compatible with torch-applied roofing membranes.

Both can easily be integrated into waterproofing build-ups, and can also accommodate projects with complex changes in direction. They can be seamlessly joined together on site, permitting a phased approach to a continuous joint which means there are no weak points.



Lite-Anchor Lightning Conductor Fixing

Lite-Anchor secures lightning conductor tape to flat roof membranes. It is a purpose-made clip, mechanically fixed to a waterproofing pad. The Lite-Anchor pad is fully bonded to the roof surface to provide a robust and durable attachment of the lightning conductor tape.

It is easy to install and provides a superior detail to accommodate high levels of movement in the conductor tape, without exerting stress on the bond to the roof.

